

## Series VM/P Parallelepiped monobloc tanks.

## Series VM/C Cylinder monobloc tanks.

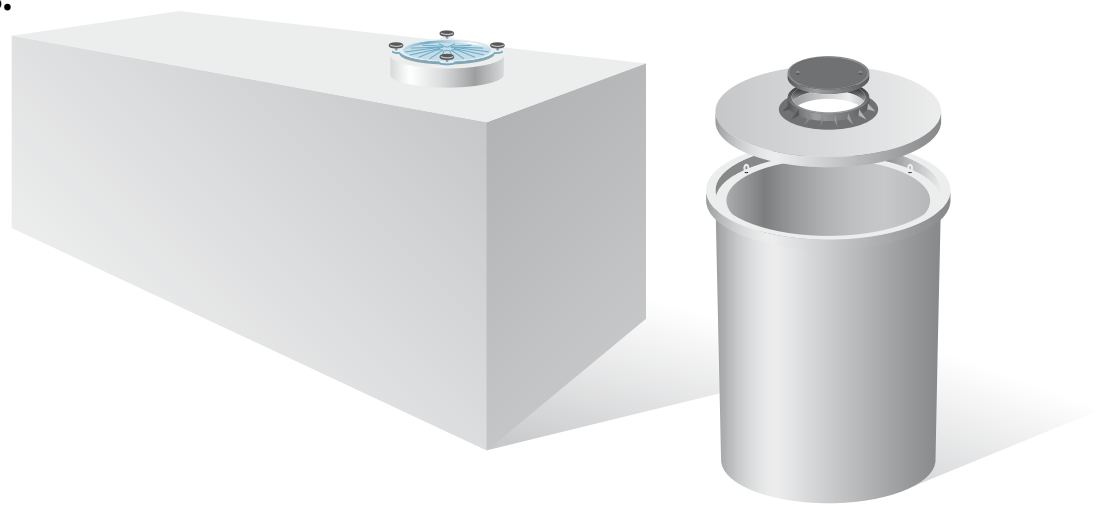
### Technical specifications

Supply of a prefabricated monobloc tank type EMS WATER TECHNOLOGY series VM/P and VM/C, made of highly resistant reinforced concrete, equipped with manhole inspections.

The Monobloc tanks type EMS WATER TECHNOLOGY series VM/P made of reinforced concrete are quickly and easily installed and may be located above or below the ground.

Special steel parts such as stubs or manholes or other may be inserted by request.

The monobloc tanks type EMS WATER TECHNOLOGY series VM/P, may be supplied with vitrification by the means of alimentary epoxy resins treatment according to the dispositions of the Law 21.03.69 n. 121 and D.M. n. 3826 dated 1.1.72.



MODEL	GEOMETRIC CAPACITY mc	WIDTH cm	LENGHT cm	HEIGHT cm	DIAMETER cm	WEIGHT q.li
VM/P 3	3,00	100	160	270	-	45
VM/P 4	4,00	140	160	270	-	54
VM/P 5	5,00	160	180	270	-	67
VM/P 6	6,00	160	250	220	-	74
VM/P 8	8,00	160	250	270	-	82
VM/P 9	9,00	160	290	270	-	90
VM/P 10	10,00	200	250	270	-	93
VM/P 13	13,00	250	250	270	-	108
VM/P 17	17,00	250	325	270	-	138
VM/P 21	21,00	250	400	270	-	165
VM/P 24	24,00	250	450	270	-	184
VM/P 29	29,00	250	550	270	-	215
VM/P 35	35,00	250	650	270	-	254
VM/P 40	40,00	250	750	270	-	293
VM/P 50	50,00	250	950	270	-	358
VM/P 53	53,00	250	1017	270	-	402
VM/C 3	3,3	-	-	282	150	28
VM/C 4	4,3	-	-	206	200	30
VM/C 6	6,2	-	-	282	200	38
VM/C 7	7	-	-	206	240	41
VM/C 10	9,8	-	-	282	240	48

The values stated are just for information. EMS WATER TECHNOLOGY retains the right to change them at any time.